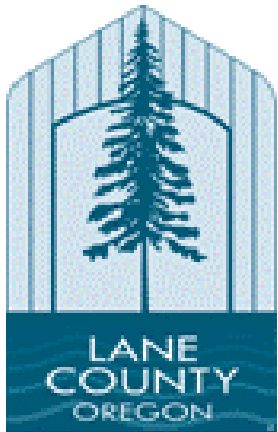


# Lane County Animals in Disaster Response Training

**Module 9: Personal and Business Preparedness**

**Module 10: Additional Training Resources**

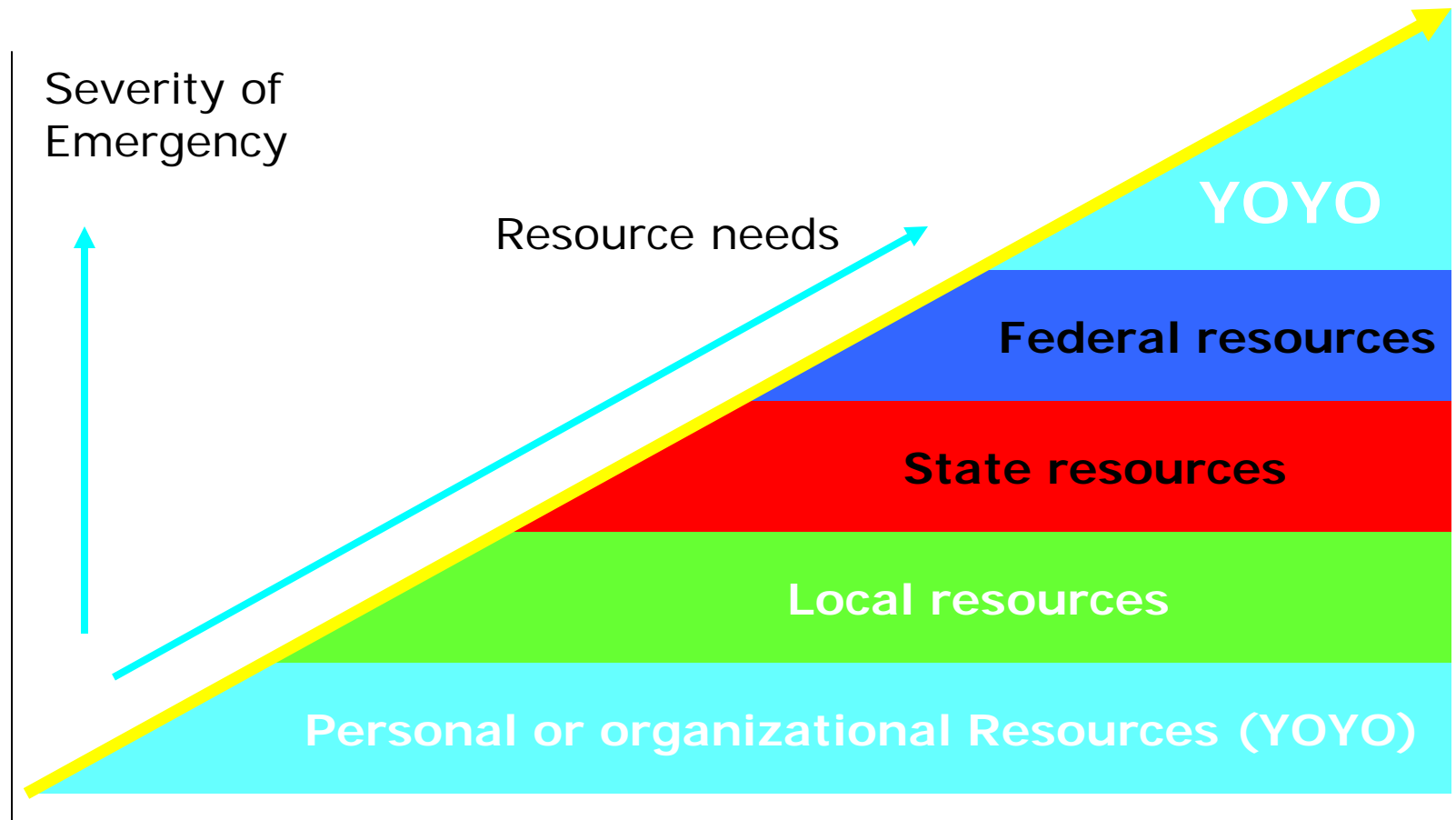


---

# Learning Objectives

- Describe why families and business need preparedness plans
  - Identify the basic steps in building a personal/family preparedness plan
  - List the key emergency supplies for families, pets and livestock
  - Identify basic components of a business risk assessment
  - Identify the basic steps in creating a business contingency plan
  - Identify additional resources to help families and businesses create emergency plans
-

# You're On Your Own (YOYO)



# Reasons for not having a plan...

- The government will take care of me!
- I have insurance
- It will never happen to me
- It won't be that bad



---

# Reasons to have a plan:

- Protects you and your family
  - Protects your pets and livestock
  - Protects your property
  - Protects your business
  - Allows critical community resources to help those who:
    - ❑ have special needs
    - ❑ are more severely impacted
  - Allows you to help in your community
-

# Preparedness Goals

- For 72 hours, you need to:
  - ❑ Take care of yourself
  - ❑ Take care of your family
  - ❑ Take care of your animals
  - ❑ Take care of your business
- Make plans to evacuate
- Be ready to shelter in place
- Be available to help your neighbors and community



# Personal Preparedness

- Basic elements:

- Make a plan including pets and livestock
- Build a kit
- Get involved



# Personal Preparedness Resources



- <http://emergency.cdc.gov/disasters/petprotect.asp>
- [www.Ready.gov](http://www.Ready.gov)
- <http://www.fema.gov/plan/prepare/animals.shtml>
- [www.redcross.org](http://www.redcross.org)
- [www.avma.org](http://www.avma.org)



# Plan Components

- Communication plan:

- Where to meet
- Who to call
  - Local
  - Out-of-state

- Evacuation plan:

- Structure fire plan
- Area evacuation plan
- People, pets, livestock, critical property



## ■ Mitigation (prevention actions)

### □ Fire

- Internal: Smoke detectors, inspections
- External: Defensible space

### □ Insurance

- Evaluate coverage
- Flood or earthquake insurance
- Documentation

### □ Structural



# Evacuation Plans

- Have pet carriers for pets
- If you own horses, have a trailer
- Train your horses to load



# Identification

- Microchip implants
  - Have copies in kit
- Registration papers
- Photographs
  - Keep copies off-site
- Brand inspection



# Preventive Healthcare

- Vaccinations
  - Rabies
  - Others as recommended
- Parasite prevention/treatment
- Periodic veterinary exam
- Geriatric care

Have copies of your documentation!



# Shelter In Place



- Considerations for pets and livestock
  - ❑ Food
  - ❑ Water
  - ❑ Shelter
  - ❑ Medications
  - ❑ First aid



# Severe Winter Storms

- People
  - ❑ Winter gear
  - ❑ Heat source
- Pets and livestock
  - ❑ Water
  - ❑ Adequate food reserves
  - ❑ Shelter



# Floods and Tornadoes

- Mitigation
  - ❑ Durable construction
  - ❑ Reinforcement of windows
  - ❑ Landscape mitigation
  - ❑ Flood insurance





# Companion Animal “Go Kit”

- Bedding/towels
- Food, water, bowls
- Prescription medications
- Grooming tools, toys
- Litter box, litter
- Trash bags, paper towels
- Veterinary records
- Leashes, collars



# Livestock “Go Kit”

- Halters, lead ropes
- Veterinary records
- Medications
- Feed/water
- Water/feed pans
- Grooming/hoof care
- First aid kit
- Blankets
- Tack and accessories



# Personal Gear for Deployment

- ❑ Pack/duffle bag, sleeping bag
- ❑ Clothing, boots, rain gear, coat, hat, work gloves
- ❑ Personal toiletries, sunscreen, sunglasses
- ❑ Prescription/non-prescription medications
- ❑ Flashlight, batteries, pocket knife, watch
- ❑ Scrubs, stethoscope
- ❑ Cell phone/charger
- ❑ Water/snacks for emergency



# Business Contingency Planning



- 43 percent of businesses experiencing a major disaster never reopen
- 29 percent of those that do reopen close within two years
- All told, 59.5% of all businesses die when affected by disasters

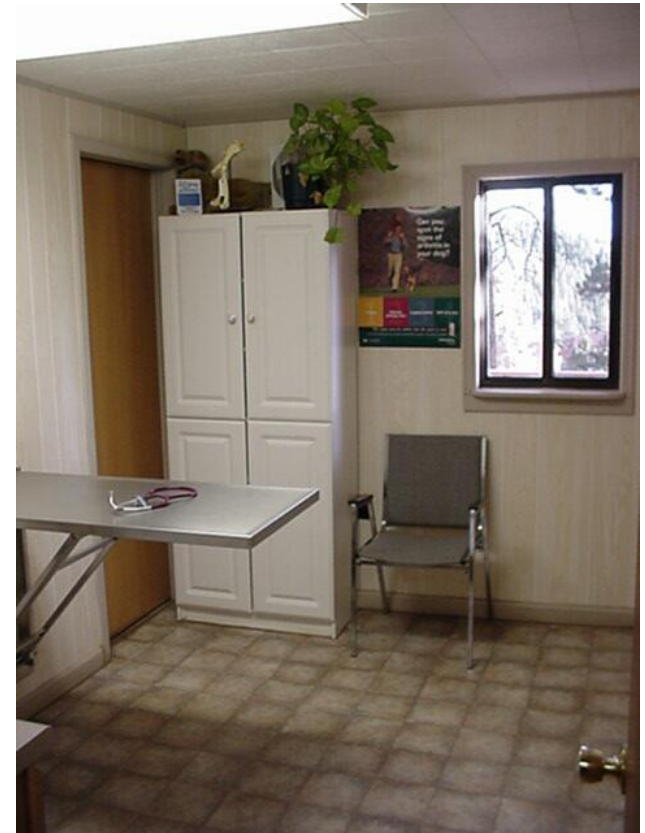
# Economic Benefit to Business Preparedness

The Federal Emergency Management Agency (FEMA) estimates that every one dollar invested in pre-disaster mitigation and preparation will save seven dollars in potential losses during a disaster.



# The Animal Industry is a Critical Community Component

- Veterinary hospitals
- Animal shelters
- Livestock production
- Livestock markets
- Fairgrounds
- Feed/animal supply retailers
- Kennels



**Disaster preparedness assures business continuity and that provides the community resources during an emergency response**



# Initial Risk Assessment

- Threats/hazards
  - ❑ Natural
  - ❑ Criminal
  - ❑ Biological
- Vulnerabilities
  - ❑ Physical
  - ❑ Staff/clients/patients
  - ❑ Supply lines/economic
- Consequences
  - ❑ High impact versus low impact



# “Cost” Versus “Risk”

- Cost to risk assessment
  - Cost of mitigation
  - Cost of full recovery
- Not every risk is worth mitigating





# Focal Hazards

- Structure fire
- Structure problems
  - plumbing, roof, asbestos, electrical
- Data systems failure
  - hardware, software, viruses
- Theft and vandalism
- Biological hazards
  - Salmonella
- Regulatory compliance



# Local/Regional Hazards

- Natural disasters
  - Fire, earthquake, flood
- Infrastructure failure
  - Utilities: power, water, sewer, communications
  - Dam or bridge failure
- Biological
- Terrorism



# The Process

- Risk assessment
- Mitigation/prevention
- Preparation/protection
- Response
- Recovery



Partnerships are key to developing a preparedness plan

---

# Your plan must include:

- Your people
    - staff, clients, management
  - Animals in your care
  - Your facility
    - building, equipment, inventory
  - Your communications
    - phone, website, internet
  - Your data
    - payroll, accounting, client and patient records
  - Your insurance
    - coverage, documentation
-

# Staff Communications and Training

- Personal preparedness training for staff
- Business plan
  - Full plan
  - “Contingency Action Plan”
    - Short version of plan with contacts, log form
- Community preparedness
  - Key messages and handouts promoting preparedness for clients



# Now that you have a plan...

- Communicate the plan
- Practice the plan
- Review and revise the plan



---

# Additional Training Resources Objectives

- At the end of this unit, you will be able to:
    - ❑ Identify additional training opportunities with various agencies and organizations.
    - ❑ Evaluate your personal readiness and areas you can train.
-

---

# Business Contingency Planning

- FEMA

- Emergency Management Guide For Business and Industry

- [www.fema.gov/business/guide/index.shtm](http://www.fema.gov/business/guide/index.shtm)

- Small Business Administration

- Disaster Preparedness and Recovery Information for Businesses

- [www.sbaonline.sba.gov/disaster\\_recov/index.html](http://www.sbaonline.sba.gov/disaster_recov/index.html)

- Association of Contingency Planners

- 1-800-445-4ACP

- [www.ACP-International.com](http://www.ACP-International.com)

---



---

# Basic requirements for Animal Response

- Orientation Power Point
- FEMA EMI Independent Study
  - NIMS: IS-700 \*
  - Incident Command: IS-100, IS-200\*
- Lane County Animals in Disaster Response Training Modules 1-10
- Animal First Aid
- Human First Aid / CPR
- Criminal background check
- Code of Conduct

\*<http://training.fema.gov/EMIWeb/IS/crslist.asp>

---

---

# Additional Training Opportunities

- FEMA Emergency Management Institute
    - ❑ IS-10 Animals in Disaster: Awareness and Preparedness
    - ❑ IS-11: Animals in Disaster: Community Planning
    - ❑ IS-111: Livestock in Disasters
    - ❑ IS-703 Resource Management
    - ❑ IS-800 National Response Framework
  - Community Emergency Response Team (CERT)
-

# All-Hazards Emergency Management

- FEMA Emergency Management Institute
  - On-site courses
- Emmitsburg, MD and Anniston, AL
  - <http://www.training.fema.gov/EMIWeb/EMICourses/>



---

# Locally Available All-Hazards Courses

- NIMS-ICS
- HAZMAT
- First Aid-CPR
- Wildfire (Red-Card)
- Red Cross Disaster Psychology and other disaster services courses.



---

# National Disaster Life Support Foundation

- <http://ndlsf.org>
  - Online disaster life support course
  - \$200
-

# Exercises: Community/Regional

- Table top
  - Real-time or time compressed
- Virtual (electronic)
- Field exercises (limited)
- Field exercises
  - Large scale
  - Multi-disciplinary
  - Multi-jurisdictional



---

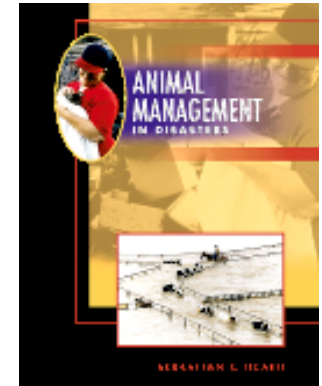
# Foreign Animal Disease

- CSU Foreign Animal Disease Course
    - 1 week in partnership with CO Department of Agriculture
  - USDA Agricultural Emergency Response Training (AgERT)
    - Noble Training Center, Anniston, AL
    - Admission via CO Division of Emergency Management, Training Officer
  - Kirkwood Community College, IA
    - AG Terrorism course for first responders
    - Agterror.org
  - LSU Agro-terrorism course for agricultural personnel
-

# Publications

- Animal Management in Disasters

- Sebastian Heath



- Agro-Security National Textbook

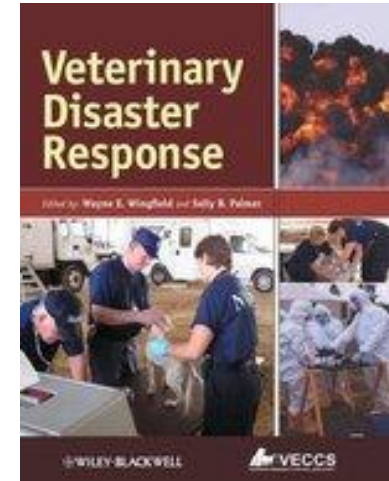
- Georgia: Corey Brown et al





# Publications

- Veterinary Disaster Response
  - Wayne Wingfield, Sally Palmer



---

# National Animal Welfare Organizations

- Other national groups
    - ❑ Best Friends
    - ❑ ASPCA
    - ❑ International Fund for Animal Welfare
    - ❑ United Animal Nations
    - ❑ Code 3
-

# Technical Animal Rescue

- Rope rescue, vehicle extraction, ice rescue, swift water, flood water
  - ❑ Code 3 Associates
  - ❑ Clemson University
    - Large Animal Rescue Team
  - ❑ University of California-Davis
    - Large Animal Rescue Team



---

Certificates of Completion  
Modules Complete!!

congratulations!



---

Thank you....

